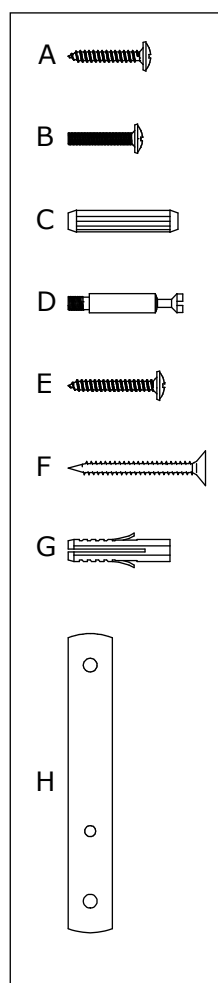
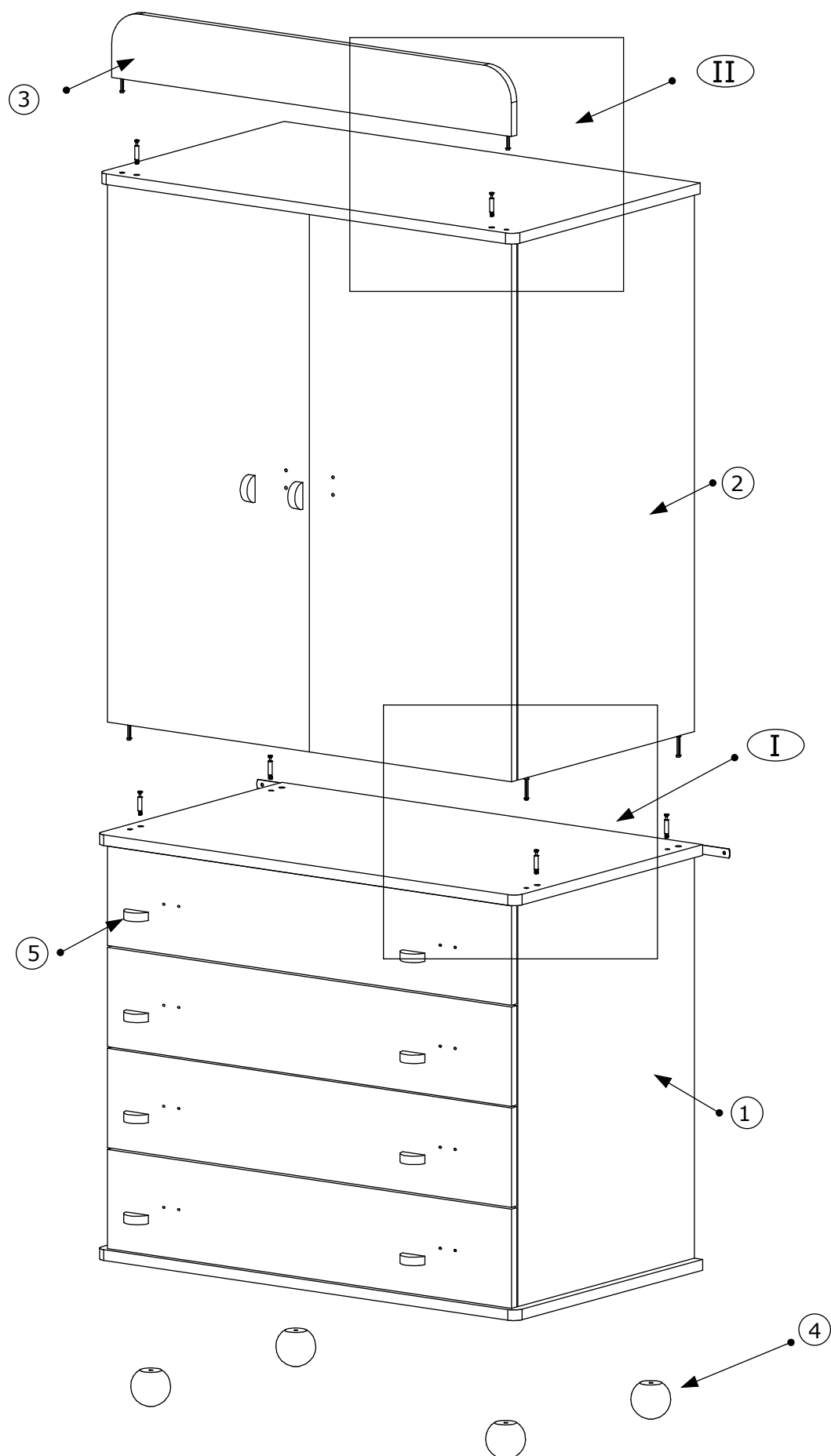


licno



Screws



WARDROBE ASSEMBLY INSTRUCTIONS

STEP 1: Take all parts out of the cartons, as well as the plastic bags with the screws. Use the drawings to help you assemble the wardrobe.

STEP 2: Lay the bottom of the wardrobe (**part 1**) back- side down. Remove the bottom two drawers. Put the feet (**part 4**) into the appropriate holes on the bottom of the wardrobe. Use the "**A**" screws from the inner bottom surface of the wardrobe to fasten the feet. Put the drawers back in place and turn the bottom of the wardrobe (**part 1**) in an upright position.

STEP 3: Use the "**B**" screws to fasten the knobs (**part 5**) on the drawers and doors of the wardrobe.

STEP 4: Fasten the "**D**" metal joints into the inner holes on the upper surface of the top of the wardrobe (**part 2**) and put the pediment (**part 3**) in place. Tighten turning the cams, located at the rear of the pediment, clockwise (**detail II**).

STEP 5: Lay the top of the wardrobe (**part 2**) back- side down. Insert the "**C**" dowels into the outer holes on the bottom of the top of the wardrobe (**detail I**).

STEP 6: Fasten the "**D**" metal joints into the inner holes (**detail I**) on the upper surface of the bottom of the wardrobe (**part1**).

STEP 7: Place the top of the wardrobe (**part 2**) onto the bottom of the wardrobe (**part 1**). Tighten turning the cams, located on the inner side surfaces of the wardrobe, clockwise (**detail II**).

STEP 8*: Fasten the "**H**" iron strips on the back of the wardrobe, using "**E**" screws. Put the wardrobe against the wall, in your desired place. Use the "**H**" iron strips as a guide and drill the wall with 8mm drill. Insert the "**G**" wall plugs into the holes. Secure the wardrobe on the wall by fastening the "**H**" iron strips using the "**F**" screws.

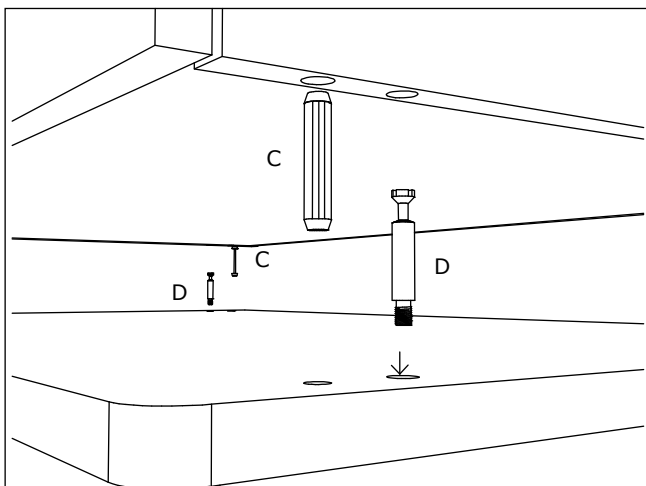
NOTES:

*: **Securing the wardrobe on the wall is required for the safety standards to apply!**

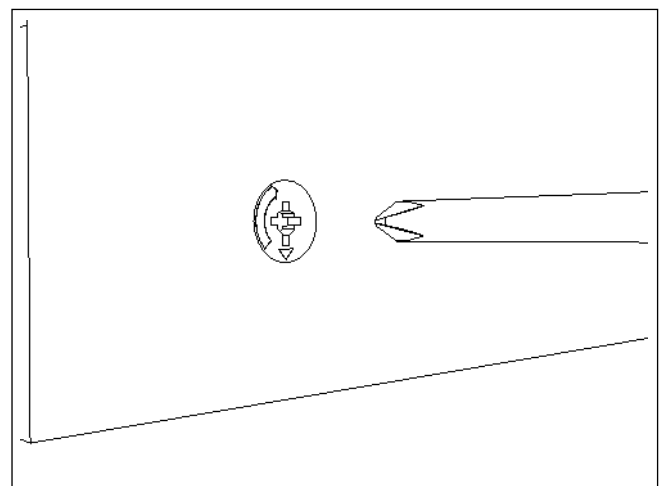
- The screws should be securely fastened. Neither too loose, nor too tight.
- Maximum load weight for each drawer 5kg.
- Do not leave the drawers open after using them.
- Keep the wardrobe away from any heating source or fire.

MATERIALS:

- Beech Wood
- MDF
- Veneer
- Chipboard with plastic coating (drawers)
- Various plastic and metallic parts
- Polyurethane varnishes (human safe)



Detail I



Detail II